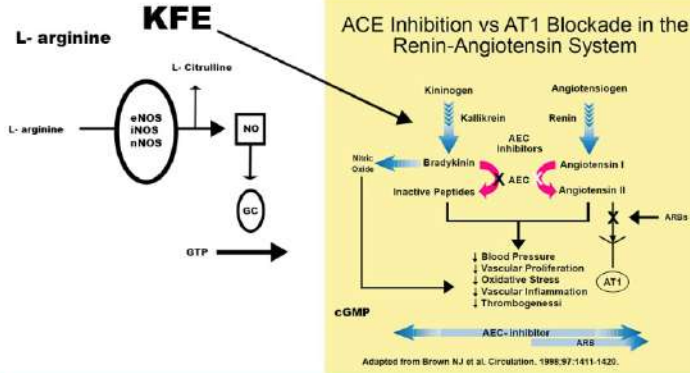


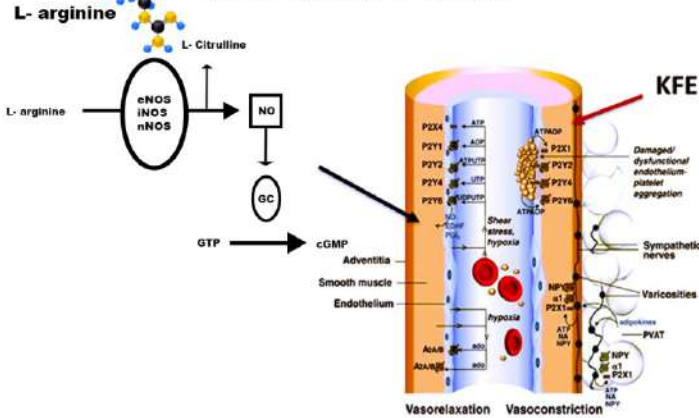
Angiotensin converting enzyme (ACE) and NO

Roles of Kiwifruit extract (KFE) and L-Arginine on blood pressure, platelet aggregation, and inflammation



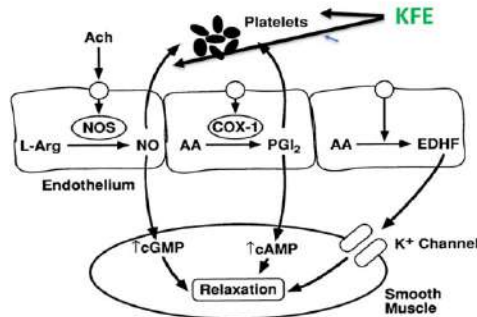
Platelet- vessel interaction

Blood Pressure regulation:
Roles Of And L- Arginine



KFE and L- Arginine

NO production and their combined roles in blood flow by increasing vasorelaxation and inhibition of platelet hyperactivity

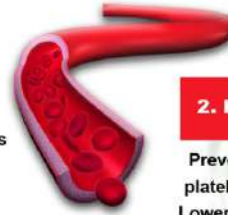


Uniqueness of YardyFine

Revolutionary Proprietary Blend for
Cardio- cerebrovascular Health

1. L- Arginine (Nitric Oxide)

Maintains the
flexibility of blood vessels



2. KFE Extract

Prevents abnormal
platelet aggregation
Lowers Hypertension

3. Synergistic Effects

Supports a healthy circulatory system

Benefits of YardyFine

Optimal oxygen and nutrients rich blood flow to body tissues resulting in improvement and betterment of **cardiovascular health**, including overall health benefits

- Widens Arteries and capillaries for Increased Blood Flow
- Increases Energy Production
- Reverses Cardiovascular Damage & Disease
- Reverses Atherosclerotic Plaque Formation
- Lowers Blood Pressure & LDL (Bad Cholesterol)
- Reduces Platelet Hyperactivity
- Reduces Blood Triglyceride Level
- Manages Diabetes by Regulating Insulin
- Reverses Kidney Disease/ Failure
- Reverses Periodontal Disease
- Boosts Exercise Performance & Endurance
- Anti-Aging Effects on Eyes, Skin and Hair
- Enhances Memory & Cognitive Function
- Reduces Skeletal & Muscular Pain



YARDLABS INTERNATIONAL PVT. LTD.

Address:

BUSINESS AT PLOT NO. S-45, KASBA INDUSTRIAL ESTATE,
PHASE-III, E.M.BYPASS, ANANDAPUR, P.S. ANANDAPUR,
KOLKATA - 700107

Customer Care no : 033-48106029



YardyFine

SUPPORTS VASCULAR HEALTH



30 VEGAN CAPSULES | Nutraceutical

Dr. Asim K. Duttaroy is an Indian-born American medical scientist who, since 2001, has worked as a Professor at the Faculty of Medicine, University of Oslo, Norway. His scientific work has been published in over 385 original contributions, reviews, books, book chapters, and editorials. He owns several international patents. His discoveries of anti-thrombotic factors in tomatoes and kiwifruits are patented internationally.



Dr. Asim K Duttaroy
MD, PhD, DSc, FNI, FICN

HONOURS/AWARDS

- 1987 Elizabeth Kushnir Memorial Award for Prostaglandin research by the American Heart Association
- 1992 Cited in "American Men and Women of Science", 18th Edition, 1992
- 1996 Hoffman La Roche Award for feto-placental research by the International Conference on PUFA Nutrition and Disease Prevention, Barcelona, Spain
- 1998-2011 Cited in Who's Who in the World Science, 15th edition
- 2000 Honorary Professor, Robert Gordon University, Aberdeen, UK
- 2000 Fellow of International College of Nutrition (FICN)
- 2000 Honorary Professor, International College of Clinical Nutrition
- 2002 Executive Member, European Academy of Nutritional Sciences
- 2002 Felicitat Award, 9th International Congress on Clinical Nutrition, London
- 2002 Recipient of the Rastogi Felicitat Award
- 2003 AFST, Kolkata
- 2004 Membership by special invitation of American Diabetes Association Professional Section.
- 2007 ICFRIP Award
- 2008 Felicitat at 13th International Clinical Nutrition, Mexico
- 2008-2010 "Transport of fatty acids across the human placenta: A review", Progress in Lipid Research, Volume 48, Issue 1, 2009
- 2011 International Conference on Food and Nutraceuticals for Nutrition and Health: Technology & Delivery (ICFAN)
- 2012 UGC Sponsored National Seminar On "Recent Trends in Research of Nutrition Science"
- 2012 All European Bangladesh Association (AEBA) AWARD
- 2013 International Conference on Food Technology: Impact on Nutrition and Health (ICFIN)
- 2013 "International Faculty" at LIFE
- 2015 (Food Science), University of Oslo Norway
- 2016 Cited in Wikipedia
- 2016 Member, Royal Society of Medicine, UK
- 2018 ICMR-National Institute of Nutrition Hyderabad, "Fats in Maternal and Child Health Nutrition – Indian Context"
- 2020 107th Indian Science Congress
- 2022 Indian Chemical Engineering Congress & 75th Annual Session of Indian Institute of Chemical Engineers

YardLabs Pvt. Ltd. and Genimen Pharmacon Pvt. Ltd., teamed with Professor Dr. Asim K Duttaroy of Oslo University (a Panelist of Nobel laureate in Medicine), have developed a supplement containing L-arginine and Kiwifruit extract (patented ingredients), which helps to maintain healthy blood circulation to support overall cardio-cerebrovascular health.

A healthy heart is essential for a healthy life. According to the World Health Organization, 17.7 million people die yearly from heart diseases, an estimated 31% of all deaths worldwide. The debilitating and often fatal complications of cardiovascular disease (CVD) are usually seen in middle-aged or older men and women. However, atherosclerosis - is the primary pathological process in which deposits of fats called plaque buildup inside the walls of arteries. Sedentary lifestyles, high-fat diets, insulin resistance, diabetes, obesity, stress, smoking and pollution are the main factors that initiate and develop the atherosclerosis processes throughout life. Eventually, plaque reduces or completely blocks blood flow, and ultimately, plaque rupture leads to heart disease and stroke.

Apart from other factors, hyperactivation of circulatory platelets is the most critical factor for atherosclerosis and CVD. The hyperactivation of blood platelets is an essential driver of inflammation, reduced blood flow, hypertension, and CVD. The expanded role of platelets brings new opportunities for controlling various CVD risk factors, targeting platelet activation. Antiplatelet drugs (aspirin, clopidogrel, etc.) are unsuitable for these vulnerable people. Supplementation of efficacious antiplatelets isolated from natural sources is recommended for general use to avoid CVD.

From a health standpoint, it has been reported that every 1mmHg reduction in SBP could prevent approximately 10,000 CVD deaths annually in the USA.

Potent antiplatelet factors were identified in kiwifruit extract (KFE), significantly inhibiting platelet aggregation and lowering blood pressure in vitro and ex vivo. This patented, scientifically proven, and natural ingredient without any side effects, which reduces the risk of CVD through its antihypertensive and blood-thinning properties, was invented by the renowned medical scientist Dr. Asim K. Duttaroy of the University of Oslo, Norway, from components specially isolated from Kiwi Fruit. KFE normalizes blood pressure and blood flow in an at-risk population.

Thus, KFE is a promising approach to achieving and maintaining healthy blood pressure and improving blood flow in the general population. *These unique properties of KFE thus help in proper blood circulation and blood pressure when taken daily and maintain cardiovascular health.*

Effects of Nitric Oxide (NO) to platelets and blood vessels

